

## Krishi Vigyan Kendras (Farm Science Centre)

### Why in News?

Government makes continuous efforts to upgrade the infrastructure of KVKs across the Country for better services to the farmers.

- **KRISHI** - Knowledge based Resource Information System Hub for Innovation in agriculture
- **Establishment** - Based on the recommendation of the Education Commission (1964-66), Planning commission and by **Dr. Mohan Singh Mehta committee (1973)**.

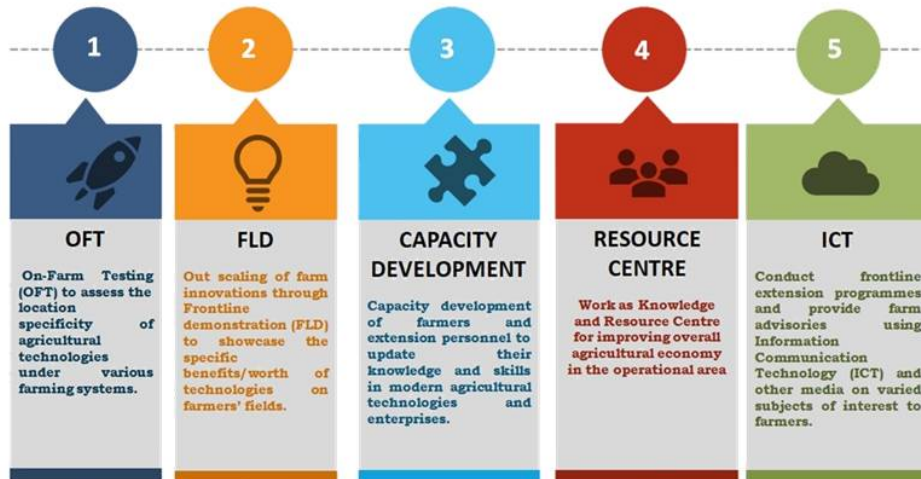
**1<sup>st</sup> KVK**, on a pilot basis, was established in 1974 at Pondicherry under the administrative control of the Tamil Nadu Agricultural University, Coimbatore. Currently, there are about 731 KVKs.

- It is 100% financed by Government of India.

Number of Krishi Vikas Kendras	
Body/Institution	Numbers
State Government	38
ICAR	66
NGO	101
Agricultural Universities	509

- **Mandate** - They are an integral part of the National Agricultural Research System (NARS).
  - **On-farm testing**
  - **Frontline demonstrations**
  - **Capacity development**
  - **Knowledge and Resource Centre**
  - **Farm advisories**

To implement the mandate effectively through creation of awareness about improved agricultural technologies, the following mandated be defined for each KVK.



- **Activities** - They assess technologies and conduct technology demonstration in farmers' fields for their adoption by the farmers.
- They produce quality technological products (seed, planting material, bio-agents, livestock) and make it available to farmers.
- They identify and document selected farm innovations and converge with ongoing schemes and programs within the mandate of KVK.
- **Monitoring and review** - It is done regularly at
  - **National level** - Indian Council of Agricultural Research
  - **Zonal level** - Agricultural Technology Application Research Institutes
  - **University level** - Agricultural Universities
  - **District level** - Scientific Advisory Committee
- They are also reviewed by the Government periodically through Quinquennial Review Teams and 3<sup>rd</sup> Party.

## Reference

1. [PIB| Upgrading Infrastructure of Krishi Vigyan Kendras](#)
2. [KVK| Krishi Vigyan Kendras](#)