

## Project INROAD (Indian Natural Rubber Operations for Assisted Development)

### Why in the news?

The coverage of natural rubber plantations in the North-Eastern States under the Project INROAD for the Financial Year, 2025 has been completed recently.

### What is Project INROAD?

- Project INROAD (Indian Natural Rubber Operations for Assisted Development) aims to develop 2 lakh hectares of Natural Rubber (NR) plantations in North East and West Bengal besides improving quality of processed forms of rubber.
- The duration of the projects is 5 years.
- **Public Private Partnership** - This collaborative project in **Public Private Partnership mode** involve tyre majors, Rubber Board and Government of India.
- **ATMA and Rubber Board** - Automotive Tyre Manufacturers Association (ATMA), a body of tyre manufacturers in the country, has collaborated with the Rubber Board for the project.
- **Industry in plantation development** - It is the first-of-its-kind in the world where the tyre industry directly invests in plantation development, transforming the region's agricultural landscape.

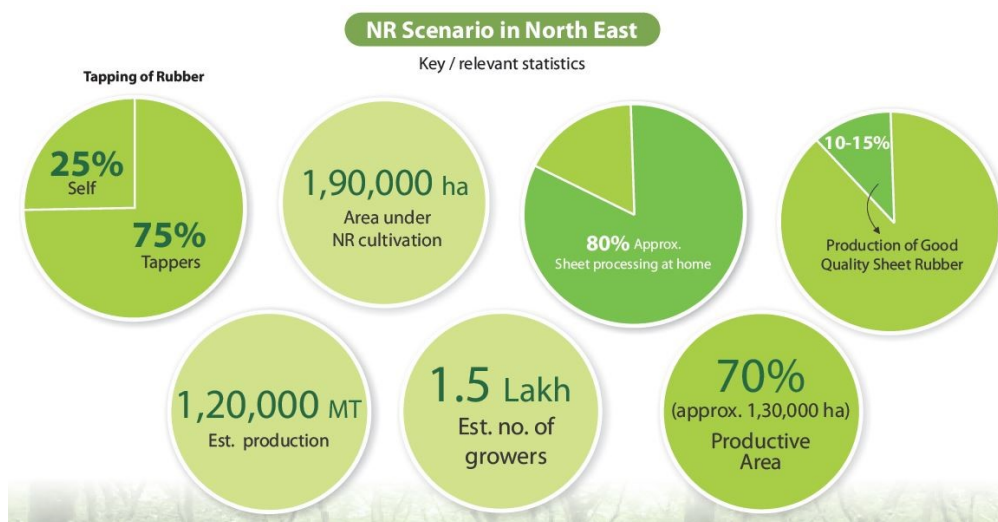


### What is the need for the project?

- **Immense potential for rubber plantation** - The North East (NE) region holds

immense potential for rubber plantation in view of availability of land and suitable agro-climatic conditions.

- At present NE states account for about 23% of the area and 15.7% of the production.
- **Tyre industry** - being the major consumer of Natural Rubber in India as it utilizes over 70% of the total Natural Rubber produced in the country.
- **Natural Rubber (NR) value chain** - India is one of the few countries which has a complete NR value chain, since it produces NR as well as its value-added products.
- It is estimated that by 2030, the country will require about 20 Lakh tonnes of NR per year.
- **NR demand & supply gap** - To meet the increasing demand of the Natural Rubber (NR).



### What are the components under the Project INROAD?

- **Financial inclusion** - Interest Subvention for loans availed by farmers and assistance in loan syndication.
- **Training and capacity building** - Creating infrastructure for training facilities and capacity building of sector stakeholders.
- Conducting training programmes for farmers, tappers, etc. practices and technologies.
- **Quality and productivity** - Enhancement of quality and productivity of rubber by taking appropriate initiatives in all rubber growing regions.
- **Support for primary inputs** - Supporting pre-planting operations (land preparation) and providing irrigation facilities.
- Providing good quality planting material and farm inputs (fertilizers, fungicide, pesticide and so on) to the farmers.
- Building water conservation pits, gully plugging, cover crop planting and so on.
- **Quality improvement program** - Creation of Model smoke houses and training of staff to manage smoke houses.
- Upgradation and repairs of the existing smoke house.
- Creation of crop weighing and related infrastructure.
- **Project management support** - Coordination with various agencies / partners.
- Physical and financial monitoring of the project.

*The Rubber Board is a statutory body constituted by the Government of India, under the Rubber Act 1947, for the overall development of the rubber industry in the country.*

### **What are the benefits of the Project INROAD?**

- **Increased production** - The project will lead to increased production of Natural Rubber for the industry.
- **Generate direct employment** - Around 825 person per hectare during immature phase and provide permanent job opportunity for 0.5 persons per hectare in matured phase.
- **Development of nurseries** - Production of other plantation inputs such as intercropping, more business or work for rubber dealers, processors and so on.
- **Local small scale industry** - Development of local small scale industry such as wood cutting & processing, furniture making and so on.
- **Livelihood opportunities** - Additional Income opportunities through other on farm activities like Bee keeping and so on.
- **Infrastructure Development** - Development of infrastructure including road infrastructure besides creation of Model smoke houses and creation of crop weighing infrastructure besides new practices.
- **Tribal settlement** - The project contribute towards tribal settlement.
- **Green leguminous ground cover** - Provides a green leguminous ground cover and green umbrella above the soil.
- **Green Funding** - Rubber tree has almost all the attributes of a forest species, carbon footprints and green Funding.
- **Carbon sequestration** - Purifies atmosphere through carbon sequestration.
- **Improves soil properties** - Through addition of organic matter, keeps the soil cool, enrich fertility, porosity and water intake capacity.

### **What are the impacts of the Project INROAD?**

- **Development of Nurseries** - Over 3 crore trees have been planted so far under the project.
- The largest impact of INROAD project has been rejuvenation of nurseries in the region.
- **Grass-root Level engagement** - 2 lakh hectares will therefore directly benefit nearly 2.5 lakh farmers and their families.
- **1.4 Lakh beneficiaries** - So far the project has benefitted nearly 1.4 Lakh beneficiaries across **94 districts** in North-eastern states.
- **Women Empowerment** - An indirect benefit of the project has been the motivation to women for a better life for them and their children.
- The commitment being exhibited by women working in the fields has been infectious.
- **Participating Member Companies (PMCs)** - Have been personally and actively engaged in supervising the project through a series of delegations.

### **Quick Facts**

### **Rubber Board of India**

- It is a statutory organization constituted under the *Rubber Act, 1947*.
- It functions under the administrative control of the *Ministry of Commerce and Industry*.
- **Headquarters** - Kottayam, Kerala.
- **Functions** - The Board is responsible for the development of the rubber industry in the country by assisting and encouraging research, development, extension and training activities related to rubber.
- It also maintains statistical data of rubber, takes steps to promote marketing of rubber and undertake labor welfare activities.
- It issues licenses to rubber producers, manufacturers, and exporters/traders.
- This license is known as the "Rubber Board license/registration," which is mandatory for anyone involved in rubber manufacturing and export.
- **Structure of Rubber Board** - The Board is headed by a Chairman appointed by the Central Government.
- It has **28 members** representing various interests of the natural rubber industry.

### **Automotive Tyre Manufacturers' Association (ATMA)**

- ATMA is amongst the most active and well known national industry bodies in the country.
- It is headquartered in New Delhi.
- It is a representative body of 6 large tyre companies in India, accounting for over 90% of tyre production.
- ATMA has been accorded the coveted status of true voice of the Indian tyre industry.
- ATMA works towards promoting and safeguarding the interests of the tyre industry in India primarily by acting as conduit between the Government and the industry.

### **References**

1. [The Hindu Business line | INROAD Project](#)
2. [INROAD Website | About the project](#)
3. [ATMA Website | About ATMA](#)
4. [Rubber board website | About Rubber Board](#)