



Daily Current Affairs Prelims Quiz 31-01-2024 (Online Prelims Test)

1) Bharat GPT, India's first indigenous GenAI (Large Language Model), is developed by which of the following?

- CoRover.ai
- Alphabet
- Microsoft
- Infosys

Answer : a

BharatGPT

India's first indigenous GenAI (Large Language Model) 'BharatGPT' was recently unveiled by the CoRover.ai.

- BharatGPT is a revolutionary **innovation by CoRover.ai**, the Conversational AI Platform.
- CoRover.ai, the world's first human-centric conversational AI platform being used by 130 crore users which has launched BharatGPT.
- It is the only Indian Indigenous Generative AI platform available across channels in 14+ Indian languages, in Video, Voice & Text.
- It integrates voice modality in more than 12 Indian languages and text modality in 22 languages in collaboration with the National Hub of Language Technology (NHLT).
- The NHLT is a key component of Digital India's efforts, tasked with executing the National Language Translation Mission (NLTM) under the ministry of electronics and information technology (MeitY).
- It also offers a sandbox environment for real-time API transactions.
- Besides, CoRover's platform, enriched with BharatGPT it offers a range of features such as:
 - Payment gateway integration,
 - Aadhar-based authentication for KYC and
 - Various AI components like speech-to-text, text-to-speech and sentiment analysis.

2) With reference to Bharat 5G Portal, consider the following statements

- It aims to propel India's 5G capabilities, foster innovation, collaboration and knowledge-sharing within the telecom sector.
- It is an integrated portal that acts as one-stop solution for start-ups, industry and academia in the fields of 5G, 6G and quantum.
- Telecommunications Consultants India Limited (TCIL) is the implementing agency of the portal.

How many of the statements given above are **incorrect**?

- Only one
- Only two
- All Three

d. None of the above

Answer : d

Bharat 5G Portal

The Bharat 5G Portal was recently launched by the Department of Telecommunications to provide one-stop solution for start-ups, industry, and academia in the fields of 5G, 6G and quantum.

- The Bharat 5G portal is an integrated portal is a comprehensive platform serving the interests of start-ups, industry and academia in quantum, 6G, IPR and 5G domains.
- It aims to propel India's 5G capabilities, foster innovation, collaboration, and knowledge-sharing within the telecom sector.
- The Portal acts as a one-stop solution for all quantum, IPR, PoCs/Pilot, 5G and 6G-related works, capturing academic R&D developments, industry standards, OEMs, start-ups/MSMEs and subject matter experts.
- Telecommunications Consultants India Limited (TCIL) is the implementing agency of the portal.

3) Consider the following statements with reference to the Snow Leopard Population Assessment in India (SPAI)

1. According to the assessment, Himachal Pradesh has the highest population of snow leopard in India.
2. Wildlife Institute of India (WII) is the National Coordinator for this exercise.
3. The snow leopard is classified as vulnerable by the International Union for the Conservation of Nature (IUCN).

How many of the statements given above are correct?

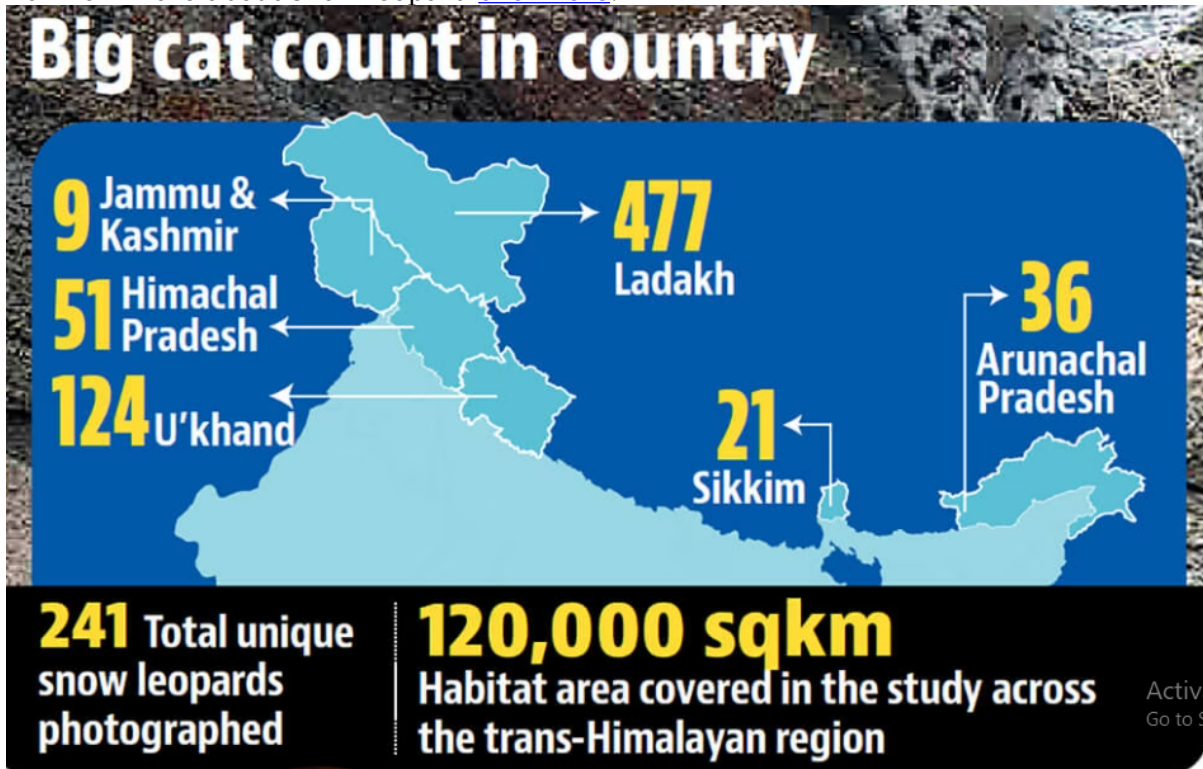
- a. Only one
- b. Only two
- c. All Three
- d. None of the above

Answer : b

Snow Leopard Population Assessment in India (SPAI)

- The Snow Leopard Population Assessment in India (SPAI) Program is an **initiative of the Dehradun-based Wildlife Institute of India (WII)**.
- It has used software and statistical methods to estimate the number of individual cats that are present but not caught on camera and combined them with those caught on camera.
- The Assessment was conducted for the years (2019-2023) and involves the **World-Wide Fund for Nature-India** and the **Nature Conservation Foundation**, Mysuru, along with the WII.
- **Key findings** - According to the report, the highest number of snow leopards are in **Ladakh (477)**.
- It is followed by Uttarakhand (124) and Himachal Pradesh (51).
- Sikkim and Jammu and Kashmir recorded 21 and 9 individuals respectively.
- **There are 718 snow leopards in India and only 1/3rd of their habitat is under legal protection.**
- Only 34 per cent of the 120,000 square kilometre (sq km) snow leopard habitat in India legally protected.
- The current estimate puts the number of Indian snow leopards from 10-15% of the global population.

- It faces multiple threats including overgrazing, human wildlife conflict, poaching, free-ranging dogs, habitat degradation, and climate change impacts.
- *Dehradun-based Wildlife Institute of India is an autonomous body of the Union Environment Ministry.*
- To know more about snow leopard [click here](#).



4) Consider the following statements with respect to the District Agro-met Units (DAMUs)

1. They are the only units involved in rendering Agro-met advisory services at a district or block level.
2. They are established by India Meteorological Department (IMD) and Indian Institute of Agricultural Research (ICAR).
3. It is a part of Soil Health Card Scheme.

How many of the statements given above are correct?

- a. Only one
- b. Only two
- c. All Three
- d. None of the above

Answer : b

District Agro-met Units (DAMUs)

The Union government has recently directed to stop the services of the District Agro-met Units (DAMUs) due to financial and administrative issues.

- District Agromet Units (DAMUs) are units established at Krishi Vigyan Kendras (KVKs) to provide block level Agro-Met (agrometeorological) Advisory Services (AAS) for farmers.
- *They are the only units involved in rendering Agro-met (agrometeorological) advisory services at a district or block level.*
- They are established by:
 1. India Meteorological Department (IMD) under the Union Ministry of Earth Sciences

(MoES)

2. Indian Institute of Agricultural Research (ICAR) under the agriculture ministry.

- DAMUs were set up in 2018-19 in the premises of Krishi Vigyan Kendras (KVK) of ICAR and state agriculture universities, **under the Gramin Krishi Mausam Seva (GKMS) scheme.**
- They have played an important role in providing value added weather forecast data for the next five days with crop specific weather advisory messages.
- **The funding agency is Ministry of Earth Sciences (MoES) or India Meteorological Department (IMD).**
- Till date, 199 District Agro-met Units (DAMUs) have been established at KVKs across the country under ICAR network.
- **Financial issues** - In the last few years, finance disbursement (especially disbursement of staff salaries) has been stuck on several occasions.
- Salaries were not being given on time and were accumulating.
- This has led to protests and complaints by DAMU employees.
- **Agro-met Field Units (AMFU)** - AMFUs also issue similar advisories similar to DAMUs, but the shortcoming is that these have less capacity, when compared to DAMUs.
- One AMFU covers 4 to 5 districts on average and will not be able to provide block level information. The two services combined cover around 2.5 million farmers.

5) Consider the following statements with respect to Corruption Perceptions Index 2023

1. It is a global corruption ranking released by the Transparency International.
2. The report uses a scale of 0 to 100, where 0 is highly corrupt and 100 is very clean.
3. India's overall score remained relatively stable when compared to 2022.

How many of the statements given above are correct?

- a. Only one
- b. Only two
- c. All Three
- d. None of the above



Answer : c

Corruption Perceptions Index 2023

- The Corruption Perceptions Index (CPI) is the most widely used global corruption ranking in the world.
- Each country's score is a combination of at least 3 data sources drawn from 13 different corruption surveys and assessments.
- These data sources are collected by a variety of reputable institutions, including the World Bank and the World Economic Forum.
- A country's score is the perceived level of public sector corruption on a scale of 0-100, where 0 means highly corrupt and 100 means very clean.
- A country's rank is its position relative to the other countries in the index. Ranks can change merely if the number of countries included in the index changes.
- **India scored 39 and ranked 93**, with minimal change from 2022.
- The score of India in the Corruption Perceptions Index 2022 was 40.
- **India shares its ranking with Maldives.**
- 71% of the countries across Asia and the Pacific have a CPI score below the regional average score of 45.
- Countries with continued high scores, such as New Zealand (3) and Singapore (5), maintain their positions at the top of the index globally.
- The global average score remains stuck at 43 for the 12th year, indicating widespread public sector corruption.
- Over 2/3rd of countries have scores below 50.

- Most transparent such as Denmark (90), Finland (87), New Zealand (85) lead the index.

