



## Daily Current Affairs Prelims Quiz 29-10-2024 (Online Prelims Test)

1) Consider the following statements with respect to North Atlantic Right Whale

1. Right whales are baleen whales that feeds on copepods.
2. The population of it has been declining in the recent years.
3. It is classified as critically endangered in the Red List of the International Union for Conservation of Nature.

How many of the statements given above are correct?

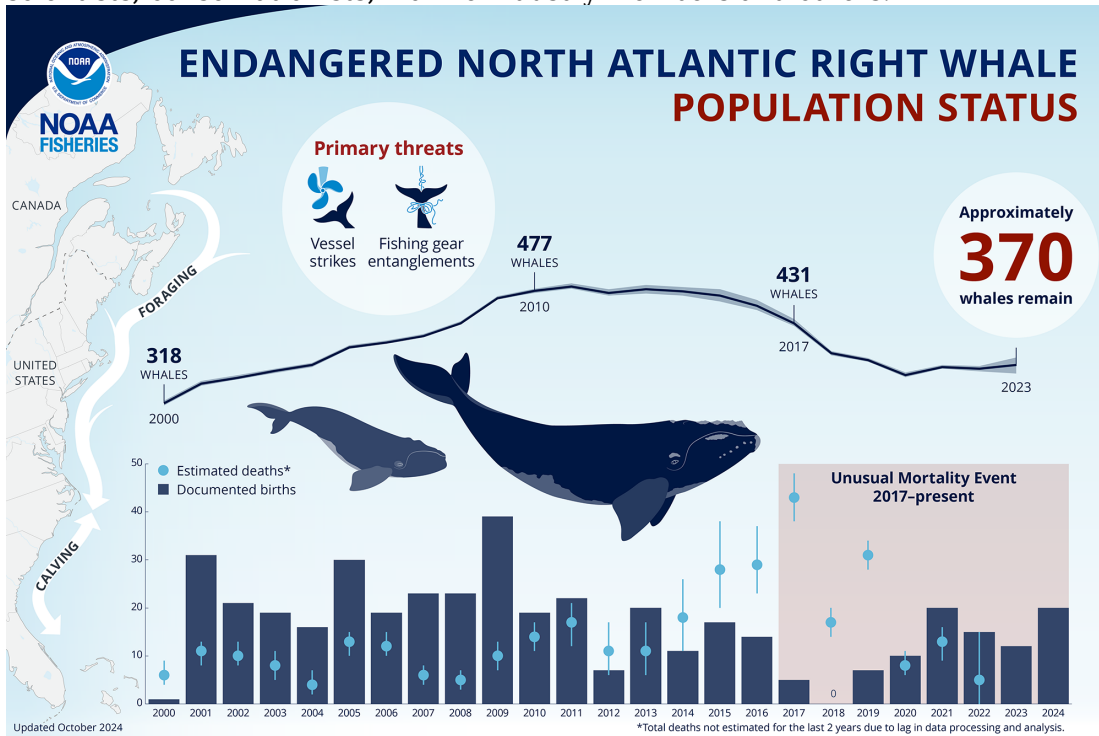
- a. Only one
- b. Only two
- c. All three
- d. None of the above

Answer : b

### North Atlantic Right Whale (NARW)

- Right whales are baleen whales that feeds on copepods (tiny crustaceans) by straining huge volumes of ocean water through their baleen plates, which act like a sieve.
- According to the most recent estimate from the North Atlantic Right Whale Consortium, NARW has continued its **slow increase** from a low of 358 individuals in 2020. (**Statement 2 is incorrect**)
- The population of NARW is one of the world's most endangered large whale specie that remains significantly smaller than it was a decade ago.
- **Features** - They have stocky black bodies with no dorsal fins, and their blow spouts are shaped like a "V."
- Their heads have knobby white patches of rough skin, called **callosities**, which appear white because of whale lice (cyamids) covering their otherwise black skin.
- Right whales can probably live for at least 70 years, but data on their average lifespan is limited since scientific monitoring of the species is fairly recent.
- **Range** - North Atlantic right whales **primarily occur in Atlantic coastal waters** on the continental shelf, although they also are known to travel far offshore, over deep water.
- **Two other species of right whales** - The North Pacific right whale, which is found in the North Pacific Ocean, and the Southern right whale, which is found in the southern hemisphere.
- **Conservation** - It is classified as critically endangered in the Red List of the International Union for Conservation of Nature.
- They have been listed as endangered under the Endangered Species Act since 1970.
- **Threats** - They have experienced an ongoing Unusual Mortality Event since 2017, which includes sub-lethally injured or ill, seriously injured, and dead right whales.
- Additionally, research demonstrates that only about 1/3 of right whale deaths are documented.
- Other threats include entanglement in fishing gear, vessel strikes, climate change, which may alter their migratory patterns and feeding area.
- The impacts of ocean noise also affect their ability to communicate, find food and navigate.

- **North Atlantic Right Whale Consortium** - Is a longstanding collaboration between scientists, conservationists, marine industry members and others.



2) The Global Tree Assessment is an initiative led by?

- Botanic Gardens Conservation International and the IUCN Species Survival Commission Global Tree Specialist Group.
- Global Green Growth Institute and United Nations Environment Programme.
- Wildlife Conservation Society and United Nations Environment Programme.
- United Nations Environment Programme and Global Environment Facility.

Answer : a

## Global Tree Assessment

According the updated report of the Global Tree Assessment, More than a third of the world's trees face extinction.

- The Global Tree Assessment is an initiative assessing the conservation status assessments for all the world's tree species available on the IUCN Red List.
- It is led by **Botanic Gardens Conservation International (BGCI) and the IUCN Species Survival Commission Global Tree Specialist Group**.
- It is a collaborative global initiative linking taxonomic, geographical, ecological and conservation information in support of biodiversity conservation policy and action.
- As of now, the Global Tree Assessment is the *largest global project*, resulting in IUCN Red List assessments of nearly 50,000 tree species carried out by more than 1,000 tree experts.
- In fact, over a quarter of all assessments on the updated IUCN Red List are now tree assessments.
- IUCN Red List assessments are important to be able to direct resources to take conservation action on species that urgently need it.
- **Highlights of the report** - The primary threats to trees globally are land clearing for agriculture, logging, pests, and diseases, which are especially prevalent in temperate regions.
- Iconic species like *magnolias, oaks, maples, and ebonies* are among the **most endangered**, reflecting a global biodiversity crisis impacting entire ecosystems.
- **Botanic Gardens Conservation International (BGCI)** - Is a membership organisation, representing botanic gardens in more than 100 countries around the world.

- It is an independent UK charity established in 1987 to link the botanic gardens of the world in a global network for plant conservation.
- **IUCN Species Survival Commission Global Tree Specialist Group (GTSG)** - It is a global network of experts who, working in their own regions and institutions, all contribute to the conservation of globally threatened trees.
- The aims of the GTSG are to conserve tree species globally, by sharing knowledge and catalyse action to halt declines, restore populations and prevent extinctions.
- The GTSG is one of over 120 IUCN/SSC Specialist Groups and Red List Authorities.

3) Microcystin, sometimes seen in the news recently, is associated with?

- A toxin from bacteria that can make animals and people sick.
- Variant of ransomware.
- An indigenous developed technology for early detection of cancer.
- A species of perennial tropical grass native to the African grasslands.

Answer : a

## Microcystin

- The microcystin is a toxin from algal blooms that can make animals and people sick when they come into contact with infected water.
- It can lead to:
  - Liver disease
  - Gut disease
  - Lung disease
  - Asthma (noted as showing "significant" inflammation increase)
- A recent research which was held at the **Lake Erie**, is located on the **border of the United States and Canada**.
- The most interesting new finding relates to aerosolization of the toxins, which can occur through:
  - Waves hitting rocks.
  - Boat activity.
  - Personal watercraft movement.
- **Aerosolization** is the process of dispersing a substance into the air as an aerosol, which is a mixture of liquid or gas and extremely small particles.

4) Consider the following statements:

1. The limit for the expenditure of Elections in India is set by the Election Commission (EC).
2. In India, there are no limits on the expenditure of political parties during elections.
3. S.S Tarapore Committee is associated with State funding of elections.

Select the correct answer using the code given below:

- 1 only
- 1 and 2 only
- 2 and 3 only
- 1, 2 and 3

Answer : b

## Expenditure of Elections

- The limit for the expenditure of Elections in India are set, from time to time, by the Election

Commission (EC).

- The election expenditure limit for candidates is *Rs 95 lakh per Lok Sabha constituency in larger States* and *Rs 75 lakh in smaller States*.
- The election expenditure limit for the Legislative Assemblies is Rs 40 lakh and Rs 28 lakh for larger and smaller States respectively.
- ***There are no limits on the expenditure of political parties during elections.***
- ***The Indrajit Gupta Committee (1998) and the Law Commission report (1999) have advocated for State funding of elections.***

*S.S Tarapore Committee is associated with Capital Account Convertibility (CAC).*

- **Challenges** - Elections across the world democracies have become very *expensive*.
- Such increased expenditure that is met primarily through *large donations* creates an unholy nexus between the elected representatives and donors who seek favours.
- This acts as an *entry barrier into electoral politics* for many well-meaning citizens.
- In India, candidates from all major political parties breach the election expenditure limits by a wide margin.

5) Consider the following pairs:

*Terms in News*                      *Countries*

1. Orvakal                      -     India
2. Mawdiangdiang       -     Iran
3. Cano Cabra               -     Colombia

How many of the pair(s) given above is/are correctly matched?

- a. Only one
- b. Only two
- c. All three
- d. None of the above

Answer : b

### **Orvakal, Mawdiangdiang and Cano Cabra**

- **Orvakal** - It is situated in the Kurnool district of Andhra Pradesh.
- The central government has recently approved Rs 2,786 crore to develop infrastructure in the *Orvakal Mega Industrial Hub*.
- **Mawdiangdiang** - Is a Village in Myllem Block in East Khasi Hills District of **Meghalaya State**, India.
- Meghalaya CM has proposed Rs 2,500 crore budget for new administrative city in Mawdiangdiang.
- The city will include everything from road connectivity, water supply and infrastructure.
- **Cano Cabra** - Is a village In **Colombia**.
- Cocaine has sustained the small, remote Colombian village of Cano Cabra.