

UPSC

Candidate must adhere to the word limit specified in the question.
Any page or portion of the page left blank must be clearly struck off.

① Bangladesh is becoming central to India's neighbourhood first policy.
Do you agree with this view? comment.

India's neighbourhood first policy - "peace, prosperity and stability in the neighbourhood promotes peace, prosperity and stability in the South Asian region and focus more on development"

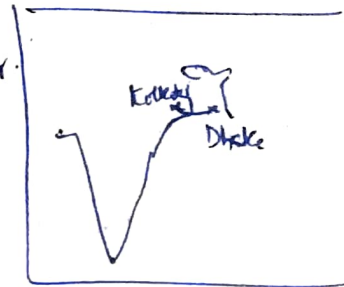
Key developments of India's neighbourhood 1st policy with

Bangladesh

Connectivity

2008 - Maitri express - 1st passenger

train between India and Bangladesh from Kolkata to dhaka.



Sub regional groupings

BIMSTEC and BBIN for both promote trade and

connectivity within the region

Anti terrorism ⇒ support ~~Anti~~ India to eliminate Anti-India terror groups in Bangladesh.

Trade

Comprehensive Framework for cooperation with

Bangladesh provides for Duty free exports signed in 2011

Today Bangladesh - top trade partner in South Asia

with \$18 billion trade

UPSC

Candidate must adhere to the word limit specified in the question.
Any page or portion of the page left blank must be clearly struck off.

Recent Initiatives :

'7' key agreements have been signed in areas of Environment, water management, Sciences technology, Law, Energy. etc,

'5' new Infrastructure projects has been signed

New water sharing agreement from R. Kushiyara
1st such agreement since Ganga water treaty, 1996

Teesta water sharing → A joint cooperation board to be established to analyse the ~~water~~ sharing of 54 transboundary water river water.

Temporary water sharing of R. Feni is also on process for tripura's water needs

Opportune areas

Trade: CEPA with Bangladesh soon. As Bangladesh will upgrade to developing country status → the benefit of LDC will be stopped. So FTA with India will be smooth transition for Bangladesh

UPSC

Candidate must adhere to the word limit specified in the question.
Any page or portion of the page left blank must be clearly struck off.

Candidates must not write on this margin.

Energy

Rising Energy demand \Rightarrow 1600 MW power plant of Adani group to share electricity through dedicated facility.

'Friendship' ~~gas~~ pipeline in Nantalingh plant of Assam to supply petroleum products to Bangladesh

Defense

$\$$ 8bn LoC is provided of which $\$$ 500 ~~bn~~ million for defense hardware. to prevent excess reliance on china and diversify.

BRI \Rightarrow Bangladesh closely assessing economic crisis in Pakistan + Sri Lanka

Religion: [PM] Hasini spreaded secularism in the country. yet Hardliner Islamists are threat to country's stability.

Both country must cooperate against such odd elements, and expect a mature leadership to strengthen ties