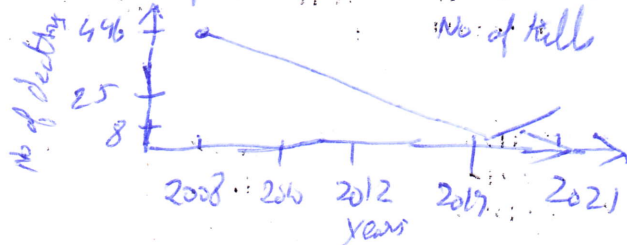


UPSC

The existence of peace at the Indo - Myanmar border is critical for the livelihoods of tribal people in the hill areas of Manipur. Discuss (200 Words)

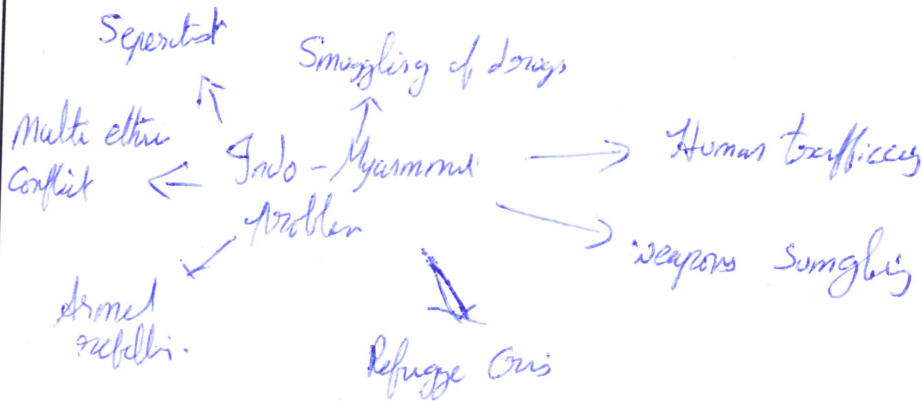
(Please don't write anything in this space)

Recent attacks on the security personnel raises a cause of concern in the strategy of securing peace in the North east region which saw a decrease in number of kill from 496 to single digit to 25 in 2021



(Please don't write anything in this space)

North east India is vulnerable due to its borders and geography which led to the rise of number of insurgents



India begins to implement its "Act east policy" through NE which is seen by opening a new trade gate at Beijing Trade Centre by NE development ministry

This raised the conflict between valley based Zomi revolutionary army and hill based People's Liberation Army (PLA). PLA shifts its focus to its rise by

## UPSC

The safe haven in ~~Sawing~~ <sup>Suwayay</sup> village in Myanmar and developed a nexus with Tatmadaw of Myanmar. ~~They~~ begin to exercise their control over trade, business people of Myanmar.

(Please don't write anything in this space)

(Please don't write anything in this space)

India already succeeded in building projects in Myanmar such as Kaladan Multimodal project in Myanmar. Army winning the hearts & minds of the people in NE. They have also initiated COIN - in which vocational training are given to the women, STs and insurgents in peaceful

way forward :

- \* Lack of private investment, Foreign investment in region

- \* Still inadequate infrastructure & well trained law & order enforcement officers.

- \* Expansion of COIN and other way catches heart of people

- \* Bring all insurgents to negotiating table

From the British rule, North east India was used as a Buffer state for British India from foreign invasion. ~~But~~ Because of its geography, many welfare measures are becoming difficult. But still it is the duty of the government to succeed in fulfilling its duty.